



Podľa dĺžky poznáme noty:

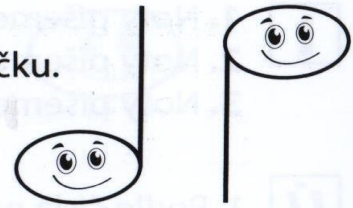
nota celá  4 doby - má prázdnu hlavičku

nota polová  2 doby - má prázdnu hlavičku a nožičku

Precvičte si písanie: polová nota sa počíta na 2 doby

## NOTA PŮLOVÁ

**i** Nota **půlová** má **2 doby**.  
Každá půlová nota má bílou hlavičku a nožičku.



**Ú** Dopiš půlové noty na linku.

Three musical staves for writing half notes. The first staff shows a solid half note followed by two dashed half notes for tracing. The second and third staves each show a solid half note followed by a blank space for writing.

**Ú** Dopiš půlové noty do mezery.

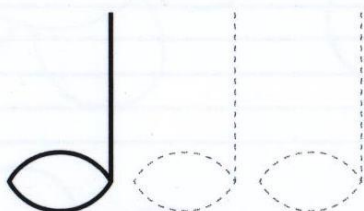
Three musical staves for writing half notes. The first staff shows a solid half note followed by two dashed half notes for tracing. The second and third staves each show a solid half note followed by a blank space for writing.

# NOŽIČKA U NOTY

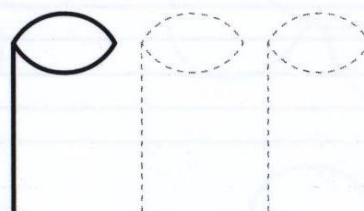


Nožičku u noty píšeme:

- směrem **nahoru** na **pravé straně** noty
- směrem **dolů** na **levé straně** noty
- nožička je dlouhá přes tři mezery



vpravo nahoru



vlevo dolů

Handwriting practice area consisting of five sets of four-line musical staves. Each set contains three notes: a solid note with a stem pointing up and a solid oval head, followed by two dashed notes with stems pointing up and dashed oval heads for tracing. The first set is labeled 'vpravo nahoru'. The second set is labeled 'vlevo dolů'. The third, fourth, and fifth sets are for tracing the 'vlevo dolů' pattern.